

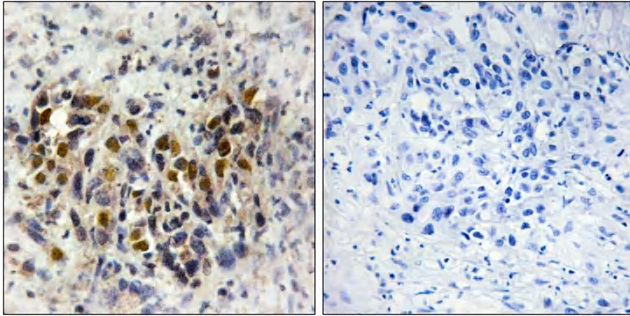


IRX3 Polyclonal Antibody

Catalog No	YP-Ab-15774
Isotype	IgG
Reactivity	Human;Mouse
Applications	IHC;IF;ELISA
Gene Name	IRX3
Protein Name	Iroquois-class homeodomain protein IRX-3
Immunogen	The antiserum was produced against synthesized peptide derived from human IRX3. AA range:271-320
Specificity	IRX3 Polyclonal Antibody detects endogenous levels of IRX3 protein.
Formulation	Liquid in PBS containing 50% glycerol, 0.5% BSA and 0.02% sodium azide.
Source	Polyclonal, Rabbit,IgG
Purification	The antibody was affinity-purified from rabbit antiserum by affinity-chromatography using epitope-specific immunogen.
Dilution	IHC: 1/100 - 1/300. ELISA: 1/20000.. IF 1:50-200
Concentration	1 mg/ml
Purity	≥90%
Storage Stability	-20°C/1 year
Synonyms	IRX3; IRXB1; Iroquois-class homeodomain protein IRX-3; Homeodomain protein IRXB1; Iroquois homeobox protein 3
Observed Band	
Cell Pathway	Nucleus .
Tissue Specificity	Muscle,Skin,
Function	similarity:Belongs to the TALE/IRO homeobox family.,similarity:Contains 1 homeobox DNA-binding domain.,
Background	IRX3 is a member of the Iroquois homeobox gene family (see IRX1; MIM 606197) and plays a role in an early step of neural development (Bellefroid et al., 1998 [PubMed 9427753]). Members of this family appear to play multiple roles during pattern formation of vertebrate embryos (Lewis et al., 1999 [PubMed 10370142]).[supplied by OMIM, Aug 2009],
matters needing attention	Avoid repeated freezing and thawing!
Usage suggestions	This product can be used in immunological reaction related experiments. For more information, please consult technical personnel.



Products Images



Immunohistochemistry analysis of paraffin-embedded human breast carcinoma tissue, using IRX3 Antibody. The picture on the right is blocked with the synthesized peptide.